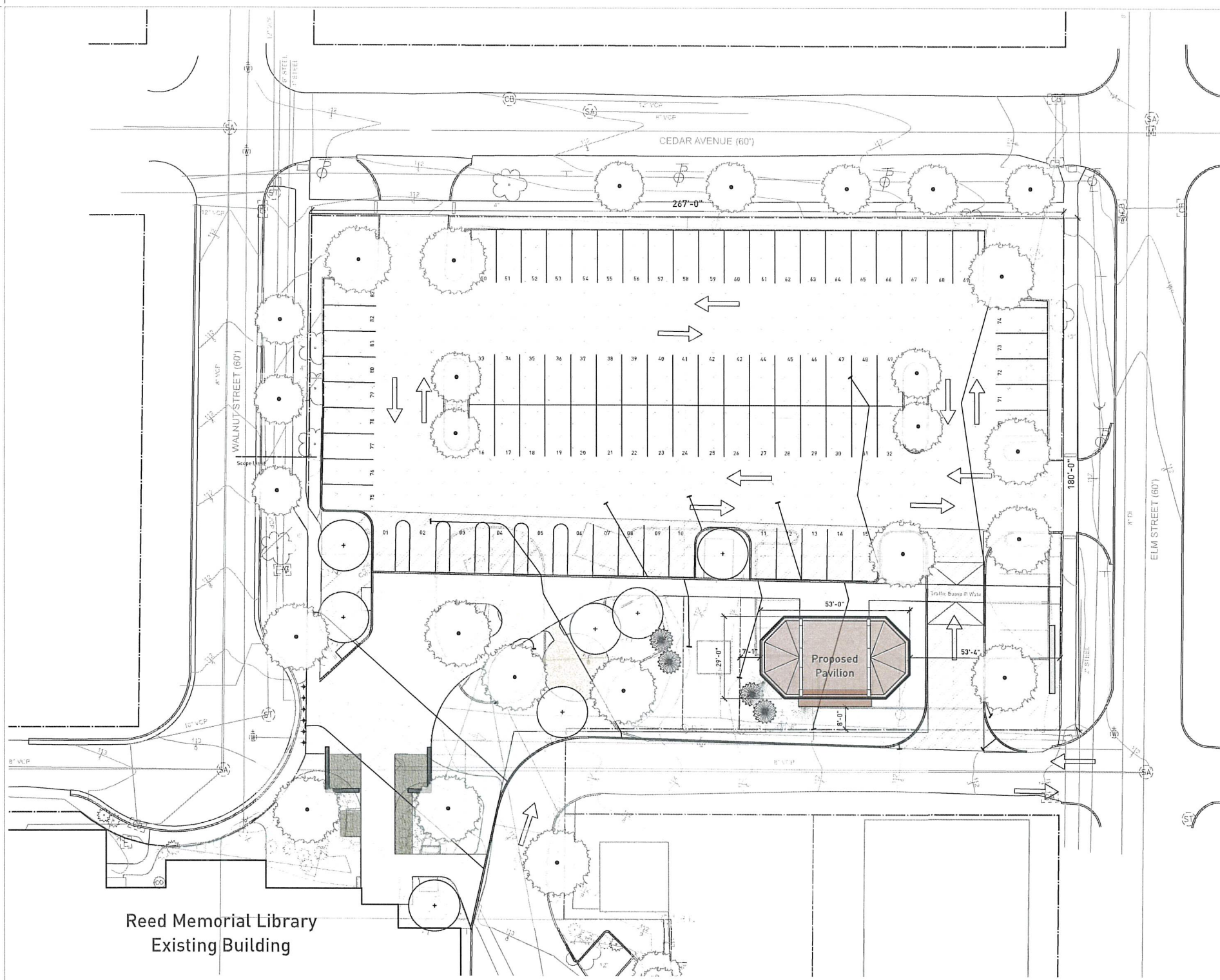
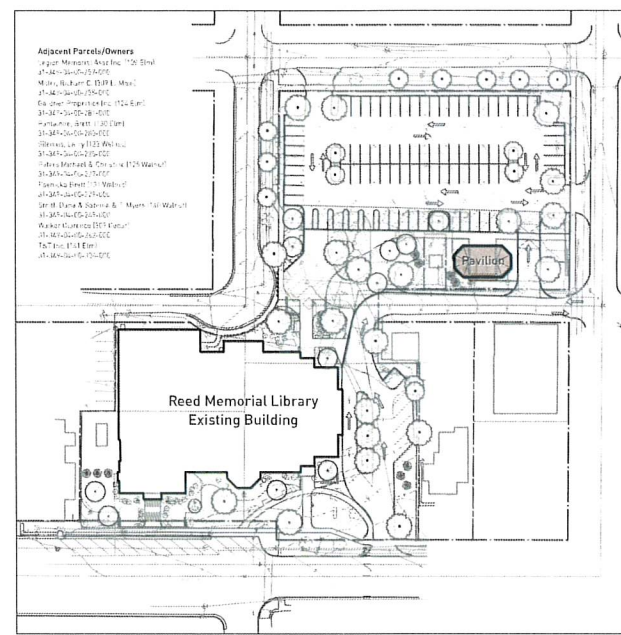


Revised Copy
6/15/23
ajf

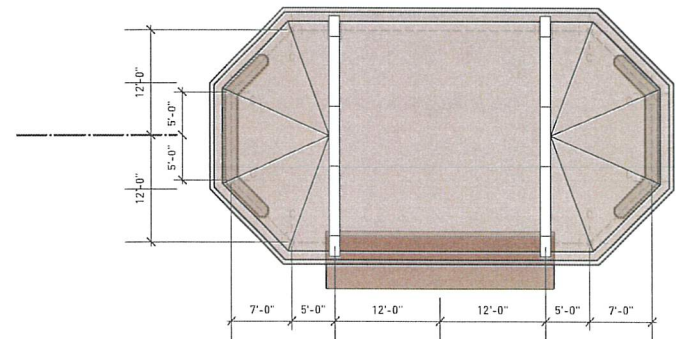


Reed Memorial Library Existing Building

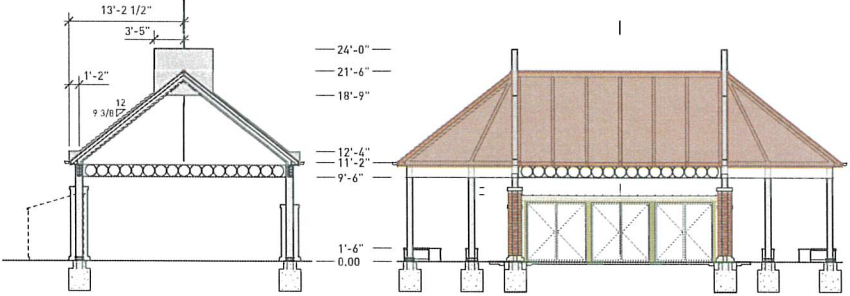
01 Plan // Site Improvement Plan
Scale: 1" = 20'-0"



02 Plan // Site Context/Circulation Plan
Scale: 1" = 80'-0"



03 Plan // Pavilion Location Plan
Scale: 1" = 10'-0"



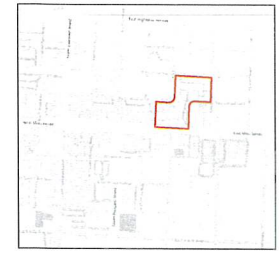
04 Section/Elevation // Pavilion
Scale: 1" = 10'-0"

- Legend: Zoning Site Plan**
- Existing Parking Area (Resurfaced)
 - Expanded Parking Area (Asphalt)
 - Open Space
 - Existing Shade Tree (KEEP)
 - Proposed Shade Tree (3)
- Owner: Reed Memorial Library Board of Trustees (City of Ravenna)**
- Associated Parcels:**
- 31-341-04-01-001
 - 31-341-04-02-001
 - 31-341-04-03-001
 - 31-341-04-04-001
 - 31-341-04-05-001
 - 31-341-04-06-001
 - 31-341-04-07-001
 - 31-341-04-08-001
 - 31-341-04-09-001
 - 31-341-04-10-001
 - 31-341-04-11-001
 - 31-341-04-12-001
 - 31-341-04-13-001
 - 31-341-04-14-001
 - 31-341-04-15-001
 - 31-341-04-16-001
 - 31-341-04-17-001
 - 31-341-04-18-001
 - 31-341-04-19-001
 - 31-341-04-20-001
 - 31-341-04-21-001
 - 31-341-04-22-001
 - 31-341-04-23-001
 - 31-341-04-24-001
 - 31-341-04-25-001
 - 31-341-04-26-001
 - 31-341-04-27-001
 - 31-341-04-28-001
 - 31-341-04-29-001
 - 31-341-04-30-001
 - 31-341-04-31-001
 - 31-341-04-32-001
 - 31-341-04-33-001
 - 31-341-04-34-001
 - 31-341-04-35-001
 - 31-341-04-36-001
 - 31-341-04-37-001
 - 31-341-04-38-001
 - 31-341-04-39-001
 - 31-341-04-40-001
 - 31-341-04-41-001
 - 31-341-04-42-001
 - 31-341-04-43-001
 - 31-341-04-44-001
 - 31-341-04-45-001
 - 31-341-04-46-001
 - 31-341-04-47-001
 - 31-341-04-48-001
 - 31-341-04-49-001
 - 31-341-04-50-001
 - 31-341-04-51-001
 - 31-341-04-52-001
 - 31-341-04-53-001
 - 31-341-04-54-001
 - 31-341-04-55-001
 - 31-341-04-56-001
 - 31-341-04-57-001
 - 31-341-04-58-001
 - 31-341-04-59-001
 - 31-341-04-60-001
 - 31-341-04-61-001
 - 31-341-04-62-001
 - 31-341-04-63-001
 - 31-341-04-64-001
 - 31-341-04-65-001
 - 31-341-04-66-001
 - 31-341-04-67-001
 - 31-341-04-68-001
 - 31-341-04-69-001
 - 31-341-04-70-001
 - 31-341-04-71-001
 - 31-341-04-72-001
 - 31-341-04-73-001
 - 31-341-04-74-001
 - 31-341-04-75-001
 - 31-341-04-76-001
 - 31-341-04-77-001
 - 31-341-04-78-001
 - 31-341-04-79-001
 - 31-341-04-80-001
 - 31-341-04-81-001
 - 31-341-04-82-001
 - 31-341-04-83-001
 - 31-341-04-84-001
 - 31-341-04-85-001
 - 31-341-04-86-001
 - 31-341-04-87-001
 - 31-341-04-88-001

- Legend: Site Parking/Circ.**
- Directional Circulation
 - Accessible Space (AS)

Tabulations - Site Parking

Area = 164,775 sqft
 Total Consolidated Lot Area = 2.41 acres
 Total Building Area = 35,261 sqft
 Parking Requirement = 71 spaces
 Library Use per 1772.621011
 1 space per 500 sqft
 35,261 sqft / 500
 Parking Summary = 88 spaces
 Rear Lot Spaces = 78 spaces
 ADA Spaces = 05 spaces
 Short Term = 05 spaces



REED MEMORIAL LIBRARY RAVENNA, OH

DWG ISSUES & REVISIONS

#	DATE	DESCRIPTION
01	06/01	RML Bid Set

IMPLEMENT

IMPLEMENT, llc
 895 N. 6th Street #201
 Columbus, OH 43201
 implement-studio.net



PROJECT CONTACT
 Jason Kentner, RLA
 Design Principal
 jason@implement-studio.net
 614.558.6742

S1.0 Zoning Site Plan

