

City of Ravenna



Curb Side Recycling Guide 2024



Recycling

The City of Ravenna contracts with Portage County Recycling for bi-weekly curbside recycling service for residential properties. Participation in the city's recycling program is required and a monthly charge is added to your Ravenna utility invoice. If you have any questions about items that can be recycled or need a recycling container please call:

Portage County Recycling: 330-678-8808
Or visit their website: portagerecycles.com

Recycling is picked up by Ward

If you are unsure of what ward you live in please look at the map on the back of this notice.
If you have a question regarding what ward you live in please call the Ravenna Utility Billing office at 330-297-2151 or Ravenna Service Director's office 330-296-6326.

Listed below are the recycling pick up days for each ward:

Ward 1:

Jan. 2, 15, 29
Feb. 12, 26
Mar. 11, 25
Apr. 8, 22
May 6, 20
Jun. 3, 17
Jul. 1, 15, 29
Aug. 12, 26
Sep. 9, 23
Oct. 7, 21
Nov. 4, 18
Dec. 2, 16, 30

Ward 2:

Jan. 3, 16, 30
Feb. 13, 27
Mar. 12, 26
Apr. 9, 23
May 7, 21
Jun. 4, 18
Jul. 2, 16, 30
Aug. 13, 27
Sep. 10, 24
Oct. 8, 22
Nov. 5, 19
Dec. 3, 17, 31

Ward 3:

Jan. 4, 17, 31
Feb. 14, 28
Mar. 13, 27
Apr. 10, 24
May 8, 22
Jun. 5, 19
Jul. 3, 17, 31
Aug. 14, 28
Sep. 11, 25
Oct. 9, 23
Nov. 6, 20
Dec. 4, 18

Ward 4:

Jan. 5, 18
Feb. 1, 15, 29
Mar. 14, 28
Apr. 11, 25
May 9, 23
Jun. 6, 20
Jul. 5, 18
Aug. 1, 15, 29
Sep. 12, 26
Oct. 10, 24
Nov. 7, 21
Dec. 5, 19

Please place your cart out the night before your collection day or no later than 5:30am on your scheduled day. Place cart with wheels toward house and keep space between the cart and other objects.



Place wheels of cart toward house.



Keep space between objects and carts.



Objects and cart are too close together.

WHAT CAN GO INTO MY CURBSIDE CONTAINER?



Aluminum & Tin Cans: Food and Beverage containers are all accepted in your curbside container. Please be sure that they are empty and rinsed free of any contaminants before placing them into your cart.

Cardboard Boxes are accepted in your curbside container. Please break it down and place it into your container. If you have excess cardboard, please stack it neatly in a pile next to your container. Pizza boxes must be free of grease and food before placing it into the container.



Milk, Juice and Food Cartons are accepted in your curbside container. Please rinse them before placing them into the cart.

Glass Bottles and Jars. Please rinse before placing them into your cart.



All Paper, Newspaper, Junk Mail, Magazines and Receipts are accepted in your curbside container. For shredded paper, please place it in a paper bag and label it shredding.

Plastics labeled #1 & #2 (Plastic Bottles and Jugs) are accepted in your curbside container. Please rinse them and place the lids back on the containers before placing them into your cart.



WHAT CAN'T GO INTO MY CURBSIDE CONTAINER?

Most Common Contaminants

Keep these common contaminants OUT of your recycling bin!



NO Recyclables in Plastic Bags

Empty loose recyclables in bin but leave the plastic bags out.



NO Food & Liquids

Compost instead! Otherwise, it belongs in the trash.



NO Electronics & Small Appliances

Donate if in good condition or schedule a bulky item pickup.



NO Textiles, Rugs, Carpet, & Bedding.

Large quantities may require special disposal.



NO Hoses, Holiday Lights, Hangers & Extension Cords

They wrap around equipment and can shut down entire facility!



NO Plastic bags, Film & Flexible Film Packaging

Take plastic bags back to local grocer to keep bags clean and dry.



NO Paper Napkins, Plates, Tissues & Cups

Compost if possible and remember to recycle the cardboard tube.



NO Polystyrene Foam

Foam and plastic to-go containers are not recyclable.



NO Tires, Auto Parts & Scrap Metal

Can damage equipment & are safety hazards. Contact local scrap recyclers or retail tire stores.



NO Construction & Wood Debris

Can damage equipment & are safety hazards. You may be able to schedule a bulky pickup or throw it in the trash.



NO Yard Waste & Wood

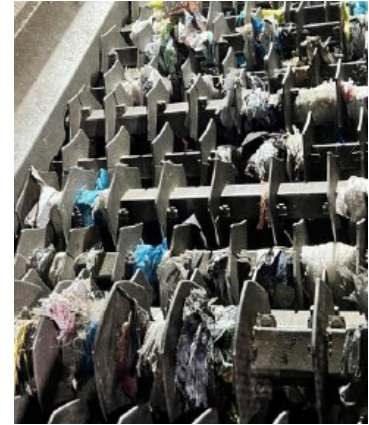
Compost or put in your yard waste cart, if available. Otherwise, it belongs in the trash.



NO Non-Recyclable Plastic

Not everything that is plastic is recyclable! Recycle only food and beverage bottles, jugs and tubs.

Contaminate items are not only non-recyclable but they can cause major breakdowns and clogs in equipment! Please do your part and keep these items out of your recycling bin.



What do I do with electronics?

Electronics should not be put into the trash or landfill as they contain toxic metals. Responsible recycling is the right thing to do. Please visit Portage County recycling during their bi-monthly recycling events for electronics, there is a fee for CRT TVs and computer monitors and a \$5 fee for printers. Please call 330-678-8808 to get information on their next event.

10 Important BENEFITS of Recycling

- Reduces Emissions (CO2)
- Healthy Ecosystem
- Conserve Resources
- Saves Energy
- Saves Money
- Eco Awareness
- Use Less Landfill
- Creates Jobs
- Supports Relations
- Domestic Market

WARD MAP

