

City of Ravenna



Curbside Recycling Guide

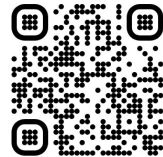
2026



Recycling

The City of Ravenna contracts with Portage County Recycling for bi-weekly curbside recycling service for residential properties. Participation in the city's recycling program is required and a monthly charge is added to your Ravenna utility invoice. If you have any questions about items that can be recycled or need a recycling container please call:

Portage County Recycling: 330-678-8808
Or visit their website: portagerecycles.com



Recycling is picked up by Ward

If you are unsure of what ward you live in please look at the map on the back of this notice.
If you have a question regarding what ward you live in please call the Ravenna Utility Billing office at 330-297-2151 or Ravenna Service Director's office 330-296-6326.

Listed below are the recycling pick up days for each ward:

Ward 1:

Jan. 12, 26
Feb. 9, 23
Mar. 9, 23
Apr. 6, 20
May 4, 18
Jun. 1, 15, 29
Jul. 13, 27
Aug. 10, 24
Sep. 8, 21
Oct. 5, 19
Nov. 2, 16, 30
Dec. 14, 28

Ward 2:

Jan. 13, 27
Feb. 10, 24
Mar. 10, 24
Apr. 7, 21
May 5, 19
Jun. 2, 16, 30
Jul. 14, 28
Aug. 11, 25
Sep. 9, 22
Oct. 6, 20
Nov. 3, 17
Dec. 1, 15, 29

Ward 3:

Jan. 14, 28
Feb. 11, 25
Mar. 11, 25
Apr. 8, 22
May 6, 20
Jun. 3, 17
Jul. 1, 15, 29
Aug. 12, 26
Sep. 10, 23
Oct. 7, 21
Nov. 4, 18
Dec. 2, 16, 30

Ward 4:

Jan. 2, 15, 29
Feb. 12, 26
Mar. 12, 26
Apr. 9, 23
May 7, 21
Jun. 4, 18
Jul. 2, 16, 30
Aug. 13, 27
Sep. 11, 24
Oct. 8, 22
Nov. 5, 19
Dec. 3, 17, 31

Please place your cart out the night before your collection day or no later than 5:30am on your scheduled day. Place cart with wheels toward house and keep space between the cart and other objects. Please keep 3ft between carts and other objects.



Place wheels of cart toward house.



Keep space between objects and carts.



Objects and cart are too close together.

WHAT CAN GO INTO MY CURBSIDE CONTAINER?



Aluminum & Tin Cans: Food and Beverage cans are all accepted in your curbside container. Please be sure that they are clean and dry before placing them into your cart.

Cardboard Boxes are accepted in your curbside container. Please break it down and place it into your container. If you have excess cardboard, please stack it neatly in a pile next to your container. Pizza boxes must be free of grease and food before placing it into the container.



Milk, Juice and Food Cartons are accepted in your curbside container. Please make sure they are clean and dry before placing

Glass Bottles and Jars Please make sure they are clean and dry before placing them in your cart.



All Paper, Newspaper, Junk Mail, Magazines and Receipts are accepted in your curbside container. For shredded paper, please call to find out what to do with it.

Plastic Bottles and Jugs are accepted in your curbside container. Please make sure they are clean and dry before placing them in your curbside container.



All recyclables should be loosely in your container

Portage County

CHaRM

Center for Hard to Recycle Materials

For some items not included in curbside collection service, Portage County offers drop off service at the recycling center in Kent Mondays or Thursdays 10am-2pm and the first Monday of each month it is open until 5pm. Some of the items accepted are Appliances, Electronics (Small fee for TVs and Printers), Scrap Passenger tires (\$.50 fee per tire), Batteries, Cooking oil, Automotive fluids.

For more information and detailed list of accepted items, please visit portagerecycles.com

WHAT CAN'T GO INTO MY CURBSIDE CONTAINER?

Most Common Contaminants

Keep these common contaminants OUT of your recycling bin!



NO Recyclables in Plastic Bags

Empty loose recyclables in bin but leave the plastic bags out.



NO Food & Liquids

Compost instead! Otherwise, it belongs in the trash.



NO Electronics & Small Appliances

Donate if in good condition or schedule a bulky item pickup.



NO Textiles, Rugs, Carpet, & Bedding.

Large quantities may require special disposal.



NO Hoses, Holiday Lights, Hangers & Extension Cords

They wrap around equipment and can shut down entire facility!



NO Plastic bags, Film & Flexible Film Packaging

Take plastic bags back to local grocer to keep bags clean and dry.



NO Paper Napkins, Plates, Tissues & Cups

Compost if possible and remember to recycle the cardboard tube.



NO Polystyrene Foam

Foam and plastic to-go containers are not recyclable.



NO Tires, Auto Parts & Scrap Metal

Can damage equipment & are safety hazards. Contact local scrap recyclers or retail tire stores.



NO Construction & Wood Debris

Can damage equipment & are safety hazards. You may be able to schedule a bulky pickup or throw it in the trash.



NO Yard Waste & Wood

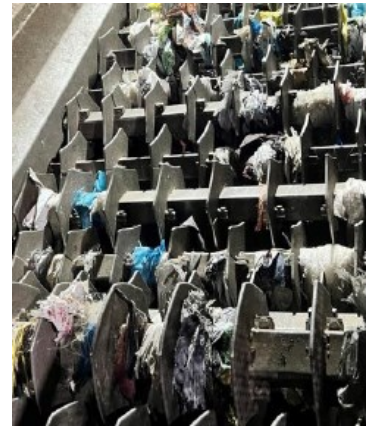
Compost or put in your yard waste cart, if available. Otherwise, it belongs in the trash.



NO Non-Recyclable Plastic

Not everything that is plastic is recyclable! Recycle only food and beverage bottles, jugs and tubs.

Contaminate items are not only non-recyclable but they can cause major breakdowns and clogs in equipment! Please do your part and keep these items out of your recycling bin.



What do I do with electronics?

Electronics should not be put into the trash or landfill as they contain toxic metals. Responsible recycling is the right thing to do. Portage County Recycling can accept electronic waste via their CHaRM program. Please visit portagerecycles.com for details. The program is available every Monday and Thursday from 10am –2pm with extended hours the first Monday of each month. There is a small fee for TVs and Printers.

Portage County

HHW

Household Hazardous Waste

The Household Hazardous Waste program is open the first Monday each month from 2pm –5pm at the Portage County Recycling facility in Kent. This is a special collection of materials such as: Acids, Adhesives, Aerosol cans, Fluorescent lights, Herbicides, Pesticides, Cleaners, Oil Based Paints/Stains/Thinners, Pool Chemicals and Solvents. Latex and oil base paint/stain will also be collected at this time. Please utilize this program to dispose of your hazardous materials. For more information please visit portagerecycles.com



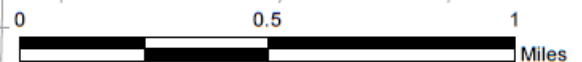
OHIO

WARD 2

WARD 1

WARD

WARD 4



1/27/2023